

# THE NANOGRAM

Martha Jefferson Hospital Laboratory Services

Winter 2010

## Quarterly Newsletter on MJH Website

This newsletter is from the Laboratory and will be distributed on a quarterly basis. It contains important information and news briefs concerning laboratory services. In addition to normal distribution, each issue will be posted at [www.marthajefferson.org/healthcare/laboratory](http://www.marthajefferson.org/healthcare/laboratory). Go to [www.marthajefferson.org](http://www.marthajefferson.org) on the Healthcare Professionals menu and select Laboratory Medicine.

## Critical Value Changes

On Tuesday January 12, 2010, the following changes in Martha Jefferson Hospital Laboratory Critical Values will be implemented. These changes are the result of an annual analysis performed by the Laboratory and Transfusion Committee. Specifically, with respect to the Troponin, input was obtained from members of the Hospitalist Service and the Cardiology Section. Final approval was sought and obtained from the Medical Executive Committee during the December 8, 2009 meeting.

### **CHANGES:**

- Troponin: Per individual patient admission, only the first elevated Troponin value will be phoned as a critical value (formerly all elevated Troponin values were considered "critical").
- Cerebrospinal fluid Gram Stain: Positive analysis only (formerly all analyses were phoned as "critical").
- Hematocrit less than 20% (formerly less than 24%)
- INR: Greater than or equal to 4.5, no critical prothrombin time (formerly INR greater than or equal to 4.5 and/or PT greater than or equal to 45).
- Calcium less than 6.5 (formerly less than 7.0).
- Creatinine greater than 10 (formerly greater than 7).
- Amylase: No critical value (formerly greater than 250).

As always, critical values will be phoned, in most circumstances, to the **ordering** physician. For private office physicians of MJH, it is essential that you provide and periodically update the lab with off-hours physician contact information for reporting of critical values.

## A "Critical Value" Story

On October 29th, Martha Jefferson Hospital Clinical Laboratory Staff called a 13.7% Hematocrit (Hct) critical value to a MJH affiliated physician. The physician returned a call to the Lab inquiring about alternative phone numbers to contact the patient since the number on file with the physician office was not in service. The technologists working that evening went to the contract lab outreach area to speak with the outreach staff about potential "next of kin" for this patient.

One of our contract representatives had the initiative and resourcefulness to search through some prior registrations for any "contact" person information. This "contact" information was given to the physician. The "contact" was notified and went to the patient's home. The patient was found unconscious on the floor of the home; and was transported to Martha Jefferson Hospital by rescue squad at which time it was determined the Hct value had fallen to 11.3%.

The patient was cared for at Martha Jefferson Hospital and discharged several days later.

Through some quick thinking and teamwork, our lab personnel helped save this patient in a serious situation. Situations like this one, make us proud to be taking care of patients at Martha Jefferson Hospital and to be part of the medical community in Charlottesville.

### **Medical Necessity Rules for HPV**

Cytology Services at MJH would like to remind offices and physicians that HPV was added to the list of tests/procedures that fall under the Medicare Medical Necessity rules. Orders for HPV as a screening test on Medicare cases **always** require an Advanced Beneficiary Notice (ABN). The HPV requirements differ from the Pap requirements in which an ABN can be waived if it has been more than 2 years since the previous Pap. **Note:** Please write "last pap>2 years" on these cases.

A couple of other useful pieces of info:

- Reflex HPV do **NOT** require an ABN. (HPV is only done if the Pap is ASCUS which is a diagnosis not requiring an ABN).
- If the Pap is **NOT** screening (ICD9 code for recent dysplasia, ASCUS, malignancy), the ABN is not needed for the Pap or HPV.

If you have any questions, please call Cytology at 434-654-7775.

### **PSA Screening Day and Women's Health Screening Day: MJH Lab Services Helps Keep the Community Healthy**

Martha Jefferson Laboratory Services successfully completed another year's Free PSA Screening on September 26th. The total number of PSA samples was 342 and they were resulted by 2:00 pm that day. Our staff enjoys contributing to the health of men in the community by participating in this screening for nearly 20 years.

In addition, November 14th was the Women's Health Screening Day at MJH and the lab took part in the day by offering lipid profiles, glucose tests, and pap tests. This event is funded by MJH Women's Committee and women can call MJH Health Connection at 654-7009 to see if they qualify. The screening and testing are by appointment only. This event has been held twice yearly for 11 years and MJH has seen a steady increase in the number of women participating.

### **Success In Timely Resulting**

As a team of laboratory professionals, the Lab personnel work hard together to achieve success. One goal for 2009 was to determine if 90% of lab work (not including send-outs, micro, and blood bank) received by 1:30 was completed by 5:30.

Result: 99% of lab work received by 1:30 was resulted by 5:30. Great job MJH Lab Services!

### **Note**

Pathology & Cytology supplies can be ordered by completing and faxing a form. Please call 434-654-7188 to get a copy faxed.

### **Section Leaders /Contact Info**

MJH Lab Services thinks good communication is a key to service and patient care. If you need to contact any of the departments, please feel free to call the lab at 654-7170 or email the section leaders.

Chemistry: [tina.murphy@mjh.org](mailto:tina.murphy@mjh.org)

Microbiology: [shirley.jenkins@mjh.org](mailto:shirley.jenkins@mjh.org)

Phlebotomy: [geoff.jackson@mjh.org](mailto:geoff.jackson@mjh.org)

Hematology: [debora.house@mjh.org](mailto:debora.house@mjh.org)

Serology/Coag/Urinalysis: [priscilla.koernert@mjh.org](mailto:priscilla.koernert@mjh.org)

Blood Bank: [steve.agboola@mjh.org](mailto:steve.agboola@mjh.org)

Cytology: [ann.lersch@mjh.org](mailto:ann.lersch@mjh.org)

Histology: [lorraine.pantella@mjh.org](mailto:lorraine.pantella@mjh.org)

3/11 Shift: [sarah.harris@mjh.org](mailto:sarah.harris@mjh.org)

### **Reminder**

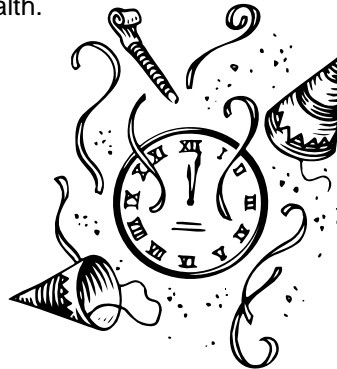
Please make note that as of August 2009, all MJH phone numbers start with the following prefix:

- **654**

Make the proper changes to your phone lists and contacts. The old prefixes will not work after January 1, 2010.

### **Happy New Year**

Everyone at Martha Jefferson Laboratory Services and Charlottesville Pathology wishes you year full of success, happiness, and good health.



### **Important Telephone Numbers**

- Need lab results from the Clinical Lab call 654-7170 or fax 654-7164.
- Outreach Department, call 654-7183
- Need lab results from the Anatomic Pathology Lab 654-7955 or fax 654-7944.
- AP Client Services Representative, Noel Jorgensen, at 654-5525

**The next Nanogram newsletter will be spring 2010  
distributed in April 2010.**